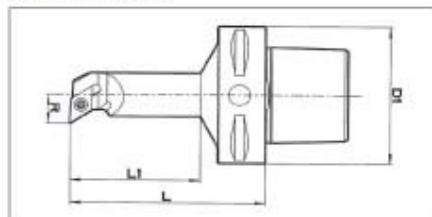
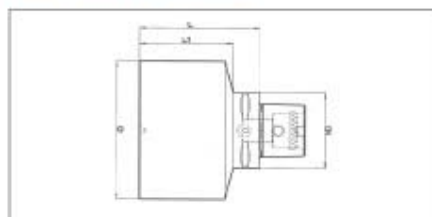


**PORTAINSERTI
BORING TOOL**



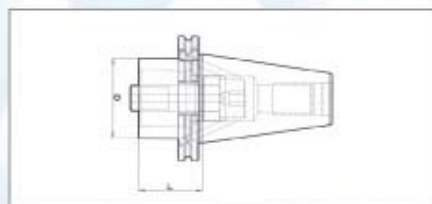
CODICE CODE	ATTACCO SHANK	R mm	D1 mm	L mm	L1 mm
PTSDUCR11-C63	C63	13	63	90	59

**MANDRINO A STELO TENERO
TOOL HOLDER BLANK**



CODICE CODE	ATTACCO SHANK	D mm	D1 mm	L mm	L1 mm
1600.63.C63	C63	63	63	180	158
1600.115.C63	C63	115	63	100	78

**RIDUZIONE ISO 50 DIN 69871 – ATTACCO POLIGONALE
REDUCTION ISO 50 DIN 69871 – POLYGONAL SHANK**



CODICE CODE	ATTACCO SHANK	D mm	L mm
CBC63-00-50B	50B	63	50

PORTAUTENSILI CON ATTACCO POLIGONALE



Portautensili con attacco poligonale secondo la norma ISO 26623-1
Polygonal shank tool holders according to the ISO 26623-1

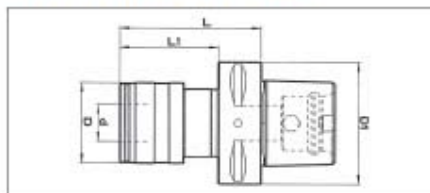


S.C.M. srl
Regione Marcaveri, 39 - 15020 MURISENGO (AL) - ITALY
Tel. +39 0141-99.36.93 r.a. / Fax +39 0141-99.36.46
Web: www.scmsrl.com / E-mail: info@scmsrl.com



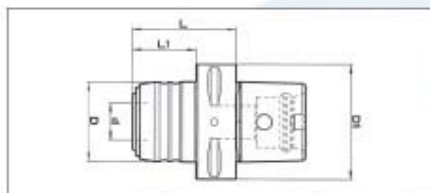
PORTAUTENSILI CON ATTACCO POLIGONALE

MASCHIATORI A CAMBIO RAPIDO SERIE 34000 TAPPING CHUCK SERIE 34000



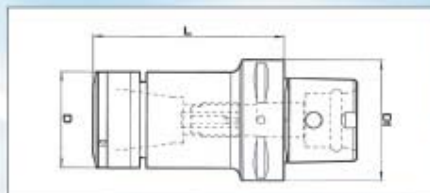
CODICE CODE	ATTACCO SHANK	D1 mm	D mm	d mm	L mm	L1 mm
34400/C63	C63	63	41	19	73	51
34600/C63	C63	63	60	31	97	75

MASCHIATORI PER MASCHIATURA SINCRONIZZATA "SYNCROLIZE" TAPPING CHUCK FOR SYNCHRONIZED TAPPING "SYNCROLIZE"



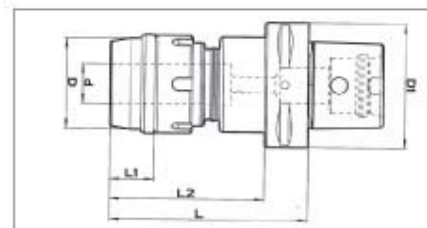
CODICE CODE	ATTACCO SHANK	D1 mm	D mm	d mm	L mm	L1 mm
23400-C63	C63	63	43	20	57	35
23600-C63	C63	63	60	32	77	55

MANDRINO PORTAPINZA ER COLLET CHUCK



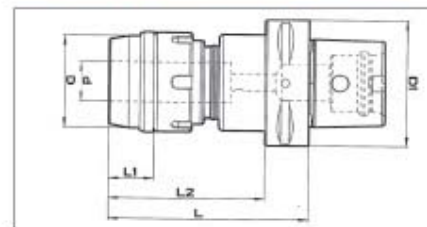
CODICE CODE	ATTACCO SHANK	PER PINZA FOR COLLET	D1 mm	D mm	L mm
2190.16.C63	C63	ER 16	63	30	130
1190.25.C63	C63	ER 25	63	40	100
1190.32.C63	C63	ER 32	63	50	100

MANDRINO A FORTE SERRAGGIO WELER HIGH CLAMPING CHUCK WELER



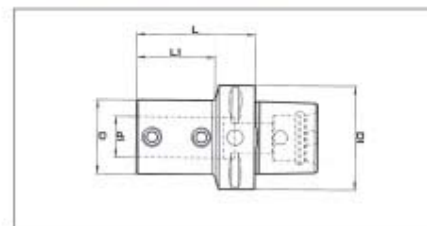
CODICE CODE	ATTACCO SHANK	D1 mm	D mm	d mm	D2 mm	L mm	L1 mm	L2 mm
516000/C63	C63	63	40	16	44	100	21	78
520000/C63	C63	63	46	20	46	100	23	78

MANDRINO A FORTE SERRAGGIO EASY LOCK HIGH CLAMPING CHUCK EASY LOCK



CODICE CODE	ATTACCO SHANK	D1 mm	D mm	d mm	D2 mm	L mm	L1 mm	L2 mm
632000/C63	C63	68	67	32	71	110	33	88

ADATTATORE PER PUNTE BORING TOOL ADAPTER



CODICE CODE	ATTACCO SHANK	D mm	D1 mm	d1 mm	L mm	L1 mm
PT-D16-C63	C63	36	63	16	70	41
PT-D16-C63	C63	40	63	20	70	42
PT-D16-C63	C63	45	63	25	72	48
PT-D16-C63	C63	52	63	32	75	50